



 **Beit Ruth**
for Young Women
and Girls at Risk

*A Place of Hope, Possibility
and Empowerment*



2022 IMPACT REPORT



A MESSAGE FROM OUR LEADERSHIP

Dear Beit Ruth Family,

It is with tremendous gratitude that we share highlights from 2022, a year of impactful physical and programmatic growth.

We couldn't be prouder of our growing community who helped us **expand the Village to 5 Residential Houses**, bringing us halfway to our long-term goal of 10 Houses. These Homes provide the **nurturing care** that our girls need and deserve, and **instill values** that guide them throughout their lives.

We also **grew our partnerships** in Israel and the U.S. toward greater awareness of violence against girls and young women; **launched our Young Leadership Council** that is inspiring a new generation of Beit Ruth ambassadors; and **designed innovative programming** to address the staggering increase in violence related to COVID, prompting the Ministry of Welfare to note, "While the lockdowns and the paralysis of the education system are things of the past, we are still dealing with the consequences of the pandemic..."

We know that it takes courage and a belief in the good of humanity to continue this work.

** We have come far, but not nearly as far as the girls in our care. **

They teach us what it means to persevere when faced with adversity, to trust when faced with fear, and to hope when faced with despair.

Take a moment to interact with our first digital Impact Report! Click on links to hear the special blessing recited over Beit Ruth's new Houses; sing along with Beit Ruth staff during a special musical performance; hear an inspiring message from Israel's First Lady, Michal Herzog; and learn how our Center of Knowledge is part of the global social change movement to end violence against girls and young women.

Beit Ruth continues to be a beacon of hope for girls and young women whose lives have been transformed and empowered. **Thanks to YOU**, they flourish into young women who make their communities, Israel, and the world a better place.

With gratitude,



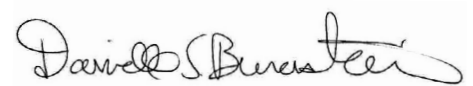
Susan Ashner
Founder & Board Co-Chair



Wendy Silverstein
Board Co-Chair



Michal Ogołnik
Board Chair, Israel



Danielle Burenstein
Executive Director

Beit Ruth is grateful for our community of supporters and the following partners:



CELEBRATING OUR DONORS & EXPANDING THE VILLAGE

With thanks to YOU, our amazing community of friends and supporters, 2022 was a milestone year of growth and impact.

Impact Feature

Our Angel donors led the way to the construction of 2 new Residential Houses that began in 2021 – during COVID – and were completed in 2022, on time and on budget! Having 5 Residential Houses will enable us to **expand our full-time care capacity** to approximately 75 girls each year who will call these houses “Home.” This achievement also brings us halfway to our long-term goal of 10 Houses in the Village.

CLICK on the photo to **HEAR** a special Hebrew blessing to celebrate the momentous achievement of opening 2 new Residential Houses.



2022 Beit Ruth Gala Celebration

Beit Ruth’s 2022 Gala was a joyous celebration of significant milestones.



At our 2022 Gala, Beit Ruth marked the completion of 2 new Residential Houses with a special Ribbon Cutting (left). We also presented Michael A. Nachman (left) with the “Beit Ruth Spirit Award” for his transformational support and naming of the “Michael A. Nachman Plaza.”



Launch of Beit Ruth’s Young Leadership Council

“At Beit Ruth, I found the courage to end my relationship with a violent boyfriend. I received special attention that helped me catch up on my studies. I worked through big issues like confidence and trust. I began to feel safe. Beit Ruth became a family and helped me heal from the inside out.”

HODAYA, BEIT RUTH ALUMNA, PRESENTING AT THE YOUNG LEADERSHIP COCKTAIL PARTY



Just months after launching the Young Leadership Council at our 2022 Gala, more than 200 young adults learned about Beit Ruth at the first and sold-out Young Leadership Cocktail Party.

Nearly 400 Beit Ruth Alumnae go on to become NURSES, SOLDIERS, and TEACHERS. Others are repairing the world by WORKING IN NON-PROFITS and WITH CHILDREN WITH SPECIAL NEEDS, or CONTINUING THEIR EDUCATION, studying criminology, visual design, and more!

GROWING OUR PARTNERSHIPS, GROWING OUR INFLUENCE

In addition to Israel's Ministries of Welfare, Education, and Foreign Affairs, Beit Ruth has forged key relationships with new partners in Israel and the U.S. Beit Ruth contributes to identifying solutions related to at-risk girls as active members of various coalitions throughout Israel, including **NIROT**, 21 organizations that identify and promote solutions for young women at-risk, and **The Coalition for Mothers At-Risk**, which promotes treatment and policies that address the needs of young mothers at-risk.

Tufts University

In 2019, Beit Ruth partnered with the Jonathan M. Tisch College of Civic Life at Tufts University on an **International Fellowship Program**. In 2022, we began a new collaboration with the **Eliot-Pearson Department of Child Study & Human Development** at Tufts. As part of a year-long research project, Tufts' Ph.D. candidate Melissa Lovitz spent 3 weeks in the Village documenting Beit Ruth's Theory of Change and signature program features that demonstrate our uniqueness and impact. *Stay tuned for results in 2023!*



Tufts University graduate student Melissa Lovitz (right) with Ronit Lev-Ari, Beit Ruth's Center of Knowledge Co-Director.

Soaring to New Heights with The Squadron

Continuing our partnership with The Squadron, a one-of-a-kind program in Israel and New York that uses flight simulators to teach leadership, teamwork, and confidence, our girls suited up in Air Force Pilot gear and learned the basics of flying and navigating F-16 and F-35 jets. **By taking control of missions, overcoming fears, taking chances, applying listening and communication skills, and learning from mistakes**, they realized valuable life skills to help rebuild their lives.

"I never thought I would have the chance to fly or take control of a mission, but that's what it felt like. It was like being a real IDF pilot. I learned how important it is to listen and to work together. I felt strong and powerful." ADI, 15 YEARS OLD

The Squadron hosted an exclusive behind-the-scenes VIP experience with IDF Commanders for top Young Leadership supporters, Donors, and Board members.



Jewish Council of North Central Florida

We hit the road in April and traveled to Gainesville for the Jewish Council of North Central Florida's **Annual Fundraiser in support of Beit Ruth**. "Pioneers in Healing Girls At-Risk: Beit Ruth's Model to Teach Healthy Sexuality to Survivors of Sexual Abuse," featured our own Mor Ben Simchon Lipin, an expert in complex post-trauma, and Jenny, a Beit Ruth alumna who shared her transformative experience.

"I'm with you today because it's important to me that Beit Ruth continues to be there for other girls who are being abused or living in the streets. I know that being at Beit Ruth can save a life because it saved mine."

JENNY, BEIT RUTH ALUMNA

The Ramaz School



The Ramaz Upper School Choir performing "This is Me." [CLICK on the photo to HEAR the song performed by Beit Ruth staff.](#)

With thanks to Ashley Rechtshaffen, a student at The Ramaz School in New York, the Ramaz Upper School Choir joined Beit Ruth's Music Teachers, Liron Tzur and Adi Luz, at our 2022 Gala for a **featured performance of "This is Me"** from "The Greatest Showman." Ashley raised critical funds for Beit Ruth's Music Studio as part of our B'nai Mitzvah Program.

The Beit Ruth B'nai Mitzvah Program is designed to **INSPIRE TZEDAKAH** (charity) and provide opportunities to youth to live their Jewish and human values of giving back and **TIKKUN OLAM** (Repairing the World). To learn more, visit www.beitruth.com/bnai-mitzvah-program.

ACADEMICS

At Beit Ruth's onsite High School, our educators continue to help our girls close significant academic gaps with which they arrive, giving them hope for the future, the audacity to dream, and the knowledge that they matter.

Israel's Ministry of Education selected Beit Ruth educator, Natalie Gerber (3rd from right), as "Teacher of the Year."



INCREASING THE CAPACITY OF LOCAL & GLOBAL COMMUNITIES TO ADDRESS GENDER-BASED VIOLENCE

Beit Ruth's Center of Knowledge widens our reach beyond the Village as we share our on-the-ground and direct service expertise to raise public, professional, and government awareness about issues related to domestic violence and abuse.

[CLICK](#) on the photo to [HEAR](#) a special message about Beit Ruth's impact from *Michal Herzog, First Lady of Israel.*



Featured Programs – Educating Leaders from Rwanda to Congo, Serbia to Kosovo


As part of a continuing partnership with MASHAV, an arm of Israel's Ministry of Foreign Affairs, leaders from Congo, Cameroon, the Dominican Republic, Ghana, Kenya, Kosovo, Liberia, Nepal, and elsewhere visited Beit Ruth during a multiday conference, "Combating Gender-Based Violence: Effective Interventions and the Survivor-Centered Approach."

Parliament Members, Lawyers, Social Workers, Police Inspectors, Clinical Psychologists, and Human Rights Officers learned best practices and strategies for addressing the needs of girls who have been abused and neglected.

[CLICK](#) on the photo to [HEAR](#) from *Tristan, Executive Chairperson of "Rwanda We Want,"* which is devoted to leadership development of the country's youth.




"I was inspired by Beit Ruth because you do so much for the girls. I wish and pray that we could do similar things in our country." ANA, DEVELOPMENT WORKER, THE PHILIPPINES

 **Beit Ruth** PRESENTS:
"Maternal Ambivalence as a Living Experience" with
DR. MARGO LOWY

Dr. Margo Lowy is a Writer and Psychotherapist with expertise in mothering and women's reproductive health.

A Zoom Educational Seminar for Beit Ruth Staff in cooperation with Beit Ruth's Center of Knowledge.

WEDNESDAY, MARCH 23 // 3:30PM IST



Dr. Margo Lowy, a Psychotherapist and expert in Maternal Ambivalence, led an educational seminar for our Israel team.

European Union – Taiwan Gender Equity Forum – Promoting Gender Equality

Beit Ruth was among the international experts and scholars from Israel, Taiwan, the U.S., Japan, Australia, the U.K., Canada, and Vietnam who shared valuable experience and insights about current policies and international issues toward ending gender-based violence.

Beit Ruth has reached nearly **18,000 stakeholders** since 2017.

ADAPTING TO POST-COVID REALITIES

During the pandemic, girls and young women in Israel and around the world experienced a significant increase in violence – what the United Nations called a “shadow pandemic.”

Beit Ruth stepped up and **created new and innovative ways to meet the challenges** resulting from:

- School closures
- Social Workers who stopped working
- Lockdowns
- Staff recruitment and retention challenges

A 16-year-old girl from Beit Ruth participates in a specially designed nature-based “Outward Bound” program to address post-COVID mental health needs.



WELCOME TO THE VILLAGE!

The Village is always bustling with visitors and volunteers. It was so much fun welcoming supporters and friends from **New York, Florida, Germany, and England**, as well as UJA’s first Birthright trip since COVID!



The Hadassah Foundation, a supporter of Beit Ruth’s Center of Knowledge, visited the Village during their 2022 Mission to Israel.



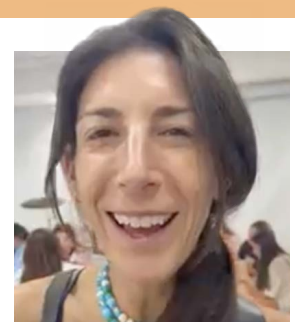
Our 6th cohort of Shinshinyot – young Israelis who defer IDF service for a year of National Service – are fully immersed in Village life – from providing one-on-one tutoring and planning extraordinary holiday celebrations like Purim, shown here, to serving as role models for our girls.

Featured Visit – The Waisman Family

What started as a Beit Ruth B’nai Mitzvah Project in support of our girls grew to a **celebratory visit to the Village with nearly 70 of Bex and Noa Waisman’s closest friends and family members.**

Interested in seeing our work in action or volunteering?
Visit www.beitruth.com/volunteer to learn more!

CLICK on the photo to HEAR Kate Waisman reflect on her family’s visit to Beit Ruth.



Beit Ruth is steadfast in our commitment to raise

KEEPING OUR COMMUNITY INFORMED

awareness of violence against girls and young women in Israel and around the world. From data to breaking news, we work to provide even greater context around the critical need to end gender-based violence. Sign up at www.beitruth.com/get-updates to stay informed about all things Beit Ruth.

[f @TheBeitRuthVillage](https://www.facebook.com/TheBeitRuthVillage) [in LinkedIn.com/company/BeitRuth](https://www.linkedin.com/company/BeitRuth) [ig @TheBeitRuthVillage](https://www.instagram.com/TheBeitRuthVillage)

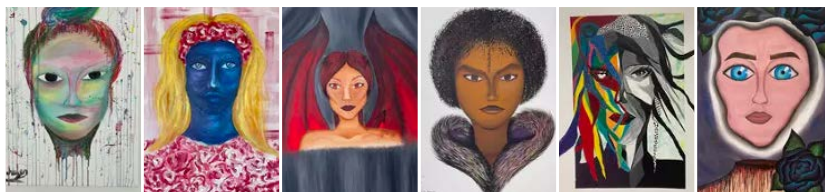
COMMEMORATIVE DAYS AROUND THE WORLD



CLICK on the photo to **HEAR** "Once at Night," a song from Beit Ruth's commemoration of International Day for the Elimination of Violence Against Women.



On Good Deeds Day, an International Day of Volunteering, Beit Ruth girls learned the value of Tikkun Olam and their own self-worth when they volunteered at Beit Uri, a home for children, youth, and adults with special needs.

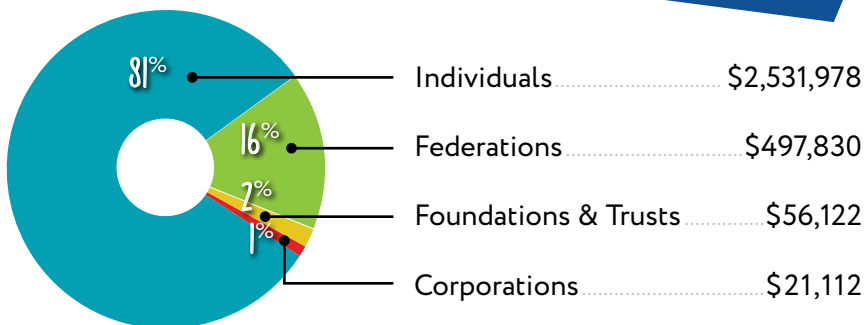


In honor of International Women's Day, the **Knesset** displayed "Portraits from the Heart," an exhibit of original artwork created by Beit Ruth's girls.

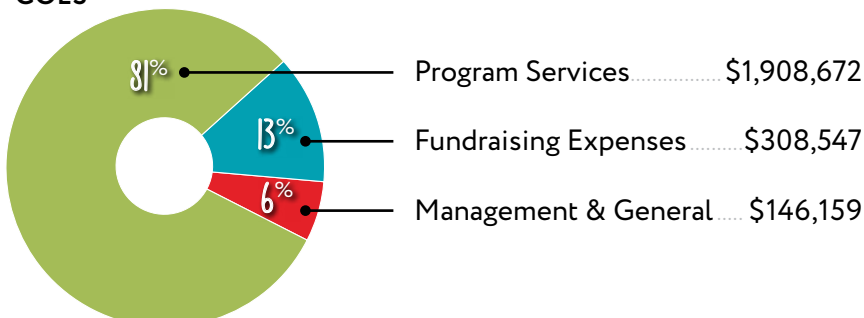
The girls of Beit Ruth are NATIVE ISRAELIS, JEWISH, RUSSIAN, ARAB, ETHIOPIAN, MUSLIM, CHRISTIAN, and others who are part of Israel's rich and diverse cultural, religious, and ethnic landscape. *What they have in common is a childhood of abuse.*

FINANCIALS 2022

WHERE THE MONEY COMES FROM



WHERE THE MONEY GOES



Beit Ruth is a not-for-profit tax-exempt charitable organization under Section 501(c)(3) of the Internal Revenue Code.

Board

- Susan Ashner, *Founder & Board Co-Chair*
- Michael Ashner, *Founder*
- Wendy Silverstein, *Co-Chair*
- Amy Dean
- Anya Gross
- Susan Noddle
- Lisa Silverstein
- Sherry Wiener

Young Leadership Council Executive Committee

- Alexandra Damaghi Dweck & David Dweck
- Zach Drobner
- Rachel & Michael Goldberg
- Stephanie & Adam Kahn

Staff

- Danielle Burenstein, *Executive Director*
- Iris Twerski, *Managing Director, Israel*
- Ronit Lev-Ari, *Co-Director, Center of Knowledge*

Contact Us

info@BeitRuth.com
 (212) 266-0112
 www.BeitRuth.com

